

IRONSIDE®

360103/G
IR202233

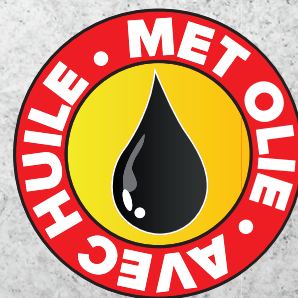
Ketel - cuve : 24L
Kop - tête : 2,0 HP
Debiet - débit : 240 l/min
Druk - pression: 8 bar
Geluidsniveau - niveau sonore: 97 dB max
Spanning - tension: 220-240V, 50 Hz
Gewicht - poids: 24 kg

**MET OLIE
AVEC HUILE**

Inductiemotor met
thermische beveiliging
Voor een langere levensduur

**2 manometers en universele koppeling
2 manomètres et raccord universel**

Moteur à induction
avec protection thermique
Pour une durée de
vie plus longue

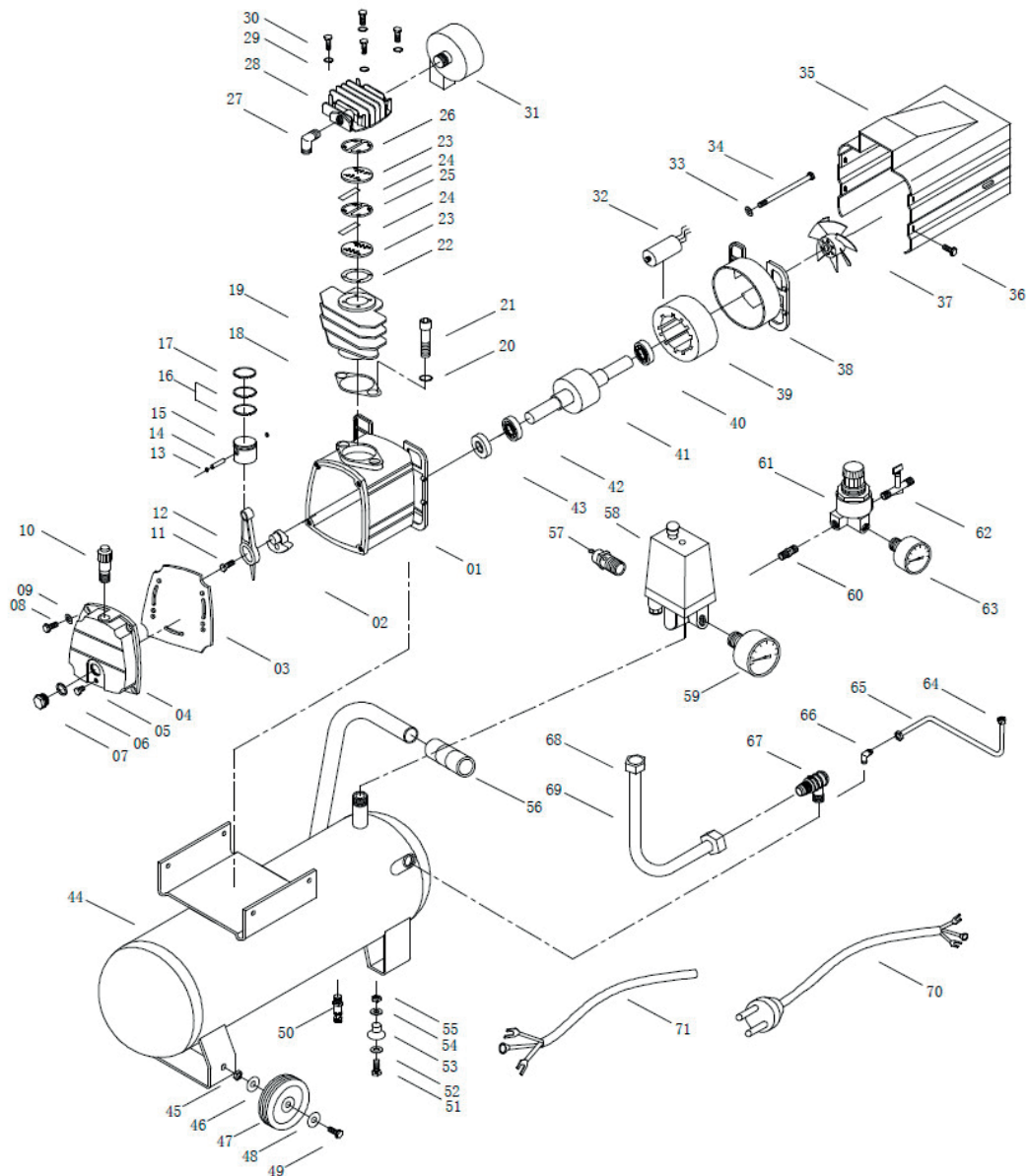


56 cm

30 cm

BOX:
W575xD275xH575 mm

53 cm



- | | | | | | |
|----------------------|------------------|------------------------|-----------------|---------------------|---------------------|
| 01. Crankcase | 14. Piston pin | 27. Elbow exhaust | 40. Bearing | 53. Cushion foot | 66. Exhaust |
| 02. Crank shaft | 15. Piston | 28. Cylinder head | 41. Rotator | 54. Washer | 67. Check valve |
| 03. Gasket | 16. Piston ring | 29. Spring | 42. Bearing | 55. Bolt | 68. Exhaust nut |
| 04. Crank case cover | 17. Piston ring | 30. Bolt | 43. Oil sealing | 56. Handle | 69. Exhaust pipe |
| 05. Bolt | 18. Gasket | 31. Air filter | 44. Tank | 57. Safety valve | 70. Plug |
| 06. Gasket | 19. Cylinder | 32. Capacitance | 45. Nut | 58. Pressure switch | 71. Electrical wire |
| 07. Oil glass | 20. Spring | 33. Spring | 46. Washer | 59. Pressure gauge | |
| 08. Bolt | 21. Bolt | 34. Bolt | 47. Wheel | 60. Connect | |
| 09. Spring | 22. Valve gasket | 35. Cover | 48. Washer | 61. Regulator | |
| 10. Breath | 23. Valve | 36. Bolt | 49. Bolt | 62. Air cock | |
| 11. Bolt | 24. Valve plate | 37. Fan | 50. Drain cook | 63. Pressure gauge | |
| 12. Connecting rod | 25. Gastet | 38. Rear bearing crank | 51. Bolt | 64. Unloading nut | |
| 13. Circlip | 26. head gasket | 39. Stator | 52. Washer | 65. Unloading pipe | |